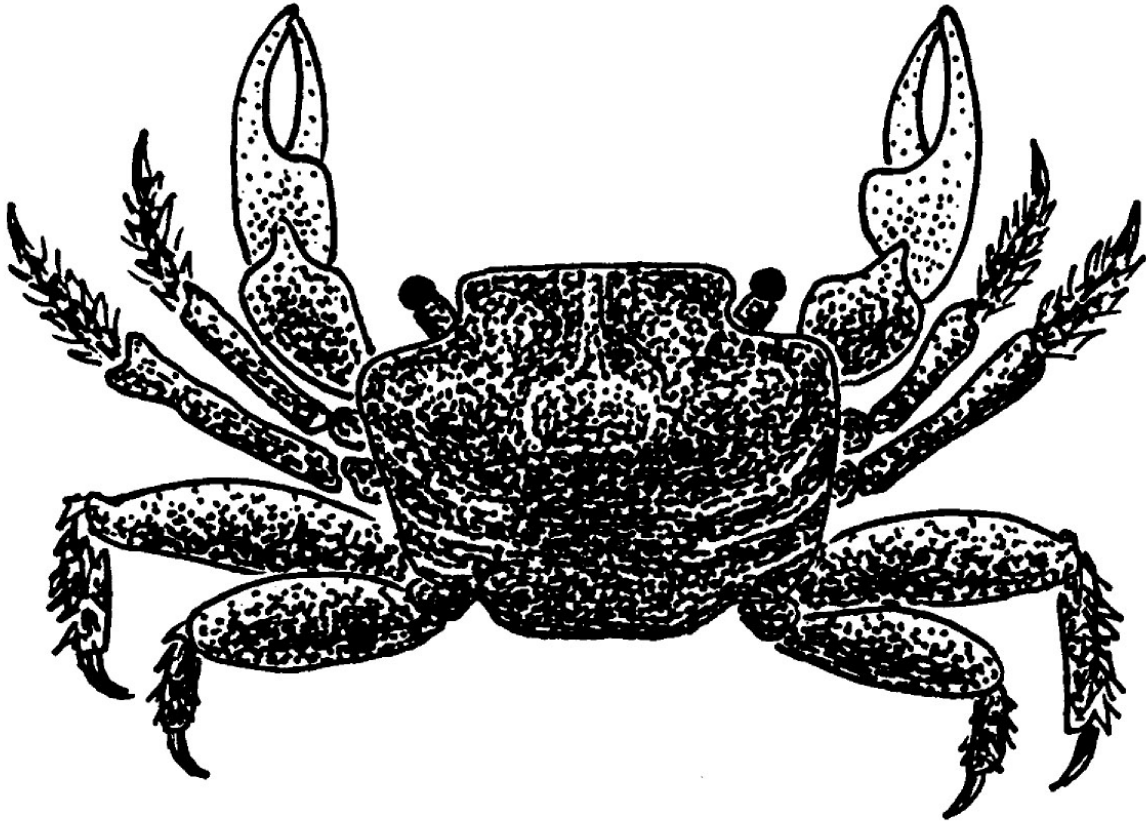


Wharf Crab



Coloring Instructions: Color most of this crab dark brown. Its front claws are also brown, but may have a purplish color as well.

Interesting Fact: Wharf crabs are just over 1 inch wide and live on the mud flats near salt marshes. They are sometimes called “Friendly Crabs” because they’ll climb right into canoes and old boots. They eat marsh grasses and will often share burrows with mud fiddler crabs.