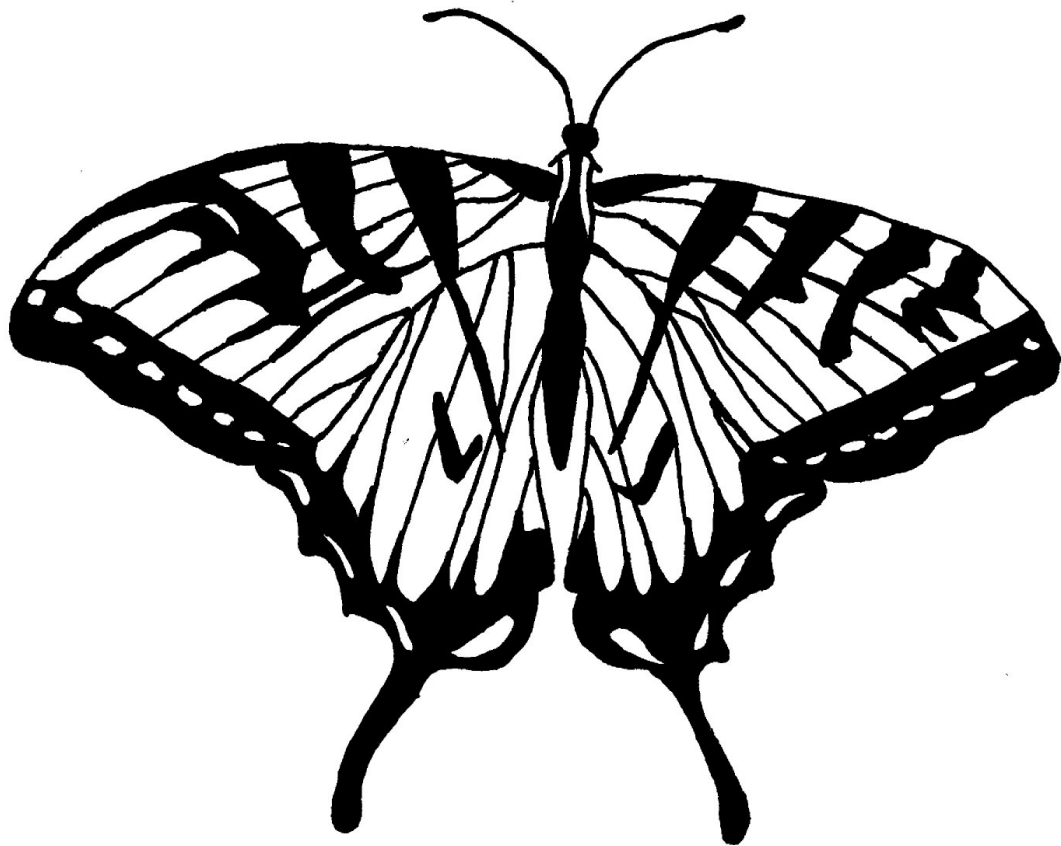


Tiger Swallowtail



Coloring Instructions: Color the two teardrop shapes at the bottom of the wings red. Color the dots along the sides of the wings bright yellow. Add some light blue at the bottom of the main wing area. Color the rest of the butterfly bright yellow.

Interesting Fact: Female tiger swallowtails can be yellow as in the picture above, or they can be much darker. This dark phase female is mostly black on the upper wings and light blue on the lower wings. Only the dots along the edges are yellow. This dark coloration makes her look like a Pipevine Swallowtail – a butterfly that tastes bad to predators. By mimicking or copying the bad tasting butterfly, the female Tiger Swallowtail hopes to avoid getting eaten.