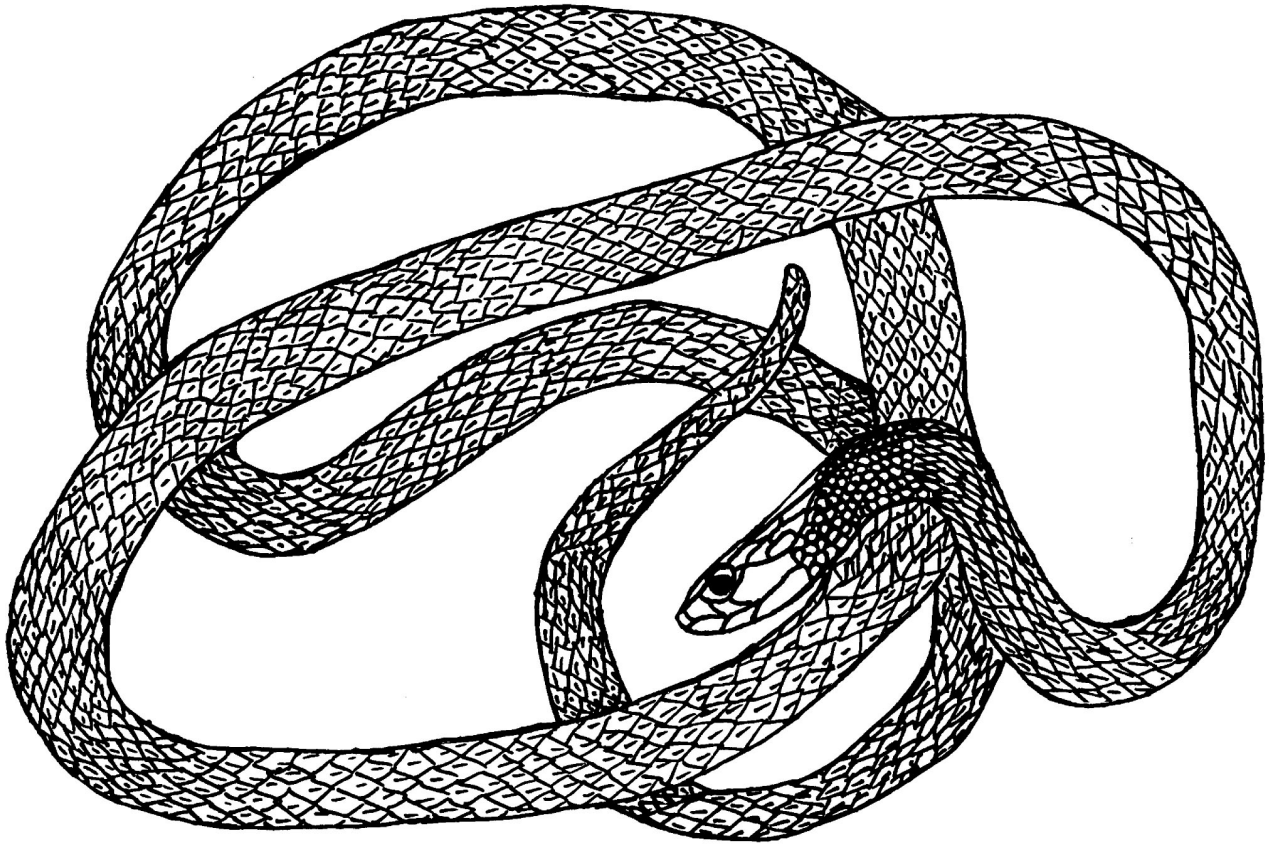


# Rough Green Snake



**Coloring Instructions** – This snake's chin and belly are yellow. Color the rest of the snake light green.

**Interesting Fact:** Rough green snakes can grow to be almost 4' long, but they are only as big around as a pencil. These non-venomous snakes are excellent climbers and spend most of their time in vines, bushes, and trees near water. They can also swim. Rough green snakes usually eat grasshoppers, crickets, caterpillars, and spiders.