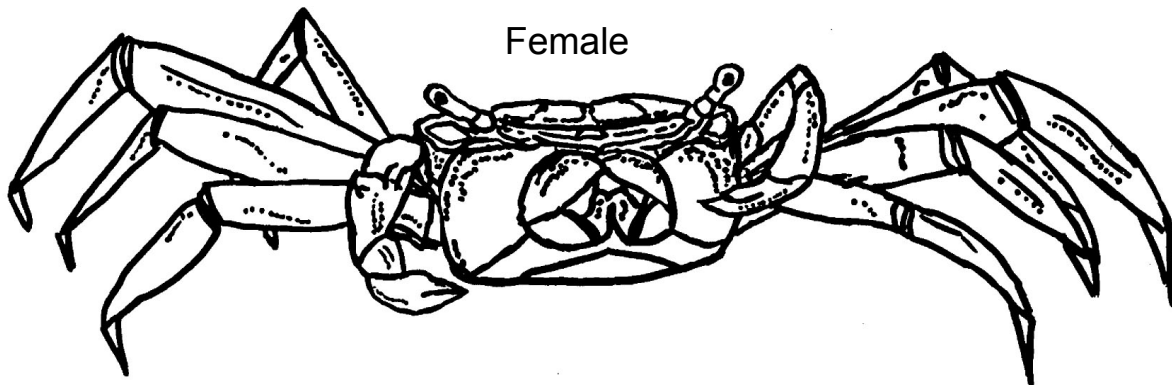
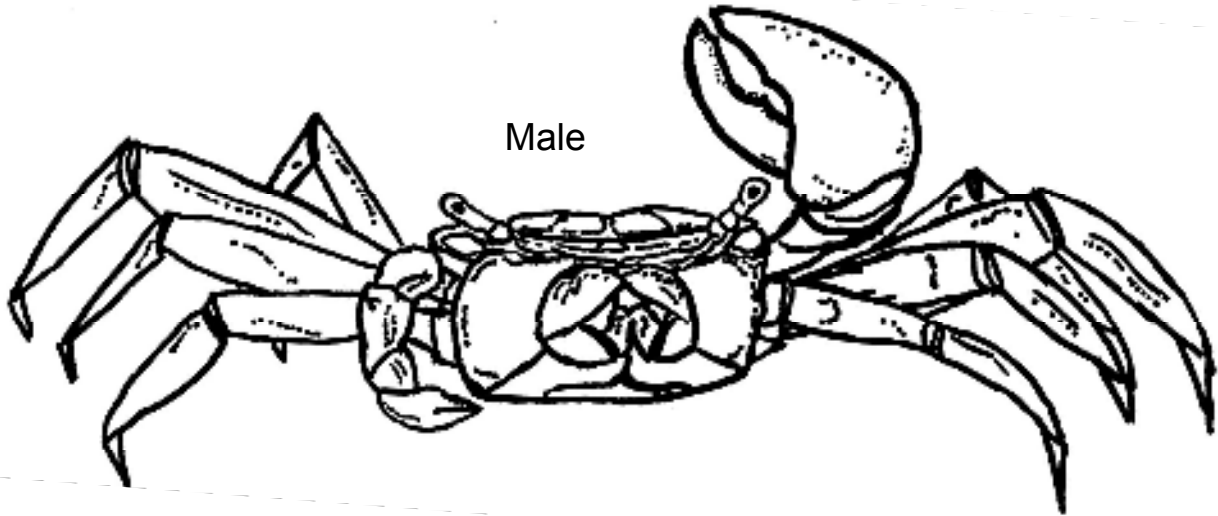


Fiddler Crab



Coloring Instructions: Color their legs and shells dark brown. The front claws should be a very light brown or cream color. The male's large claw may have a reddish color instead of being light brown.

Interesting Fact: When the male wants to attract a female, he waves his large claw to get her attention. Males will also arm wrestle other males to show the females who is strongest. They are called fiddler crabs because the male's one large claw looks similar to a fiddle. These crabs are only 1-2 inches long. They live on sandy beaches and in muddy salt marshes.