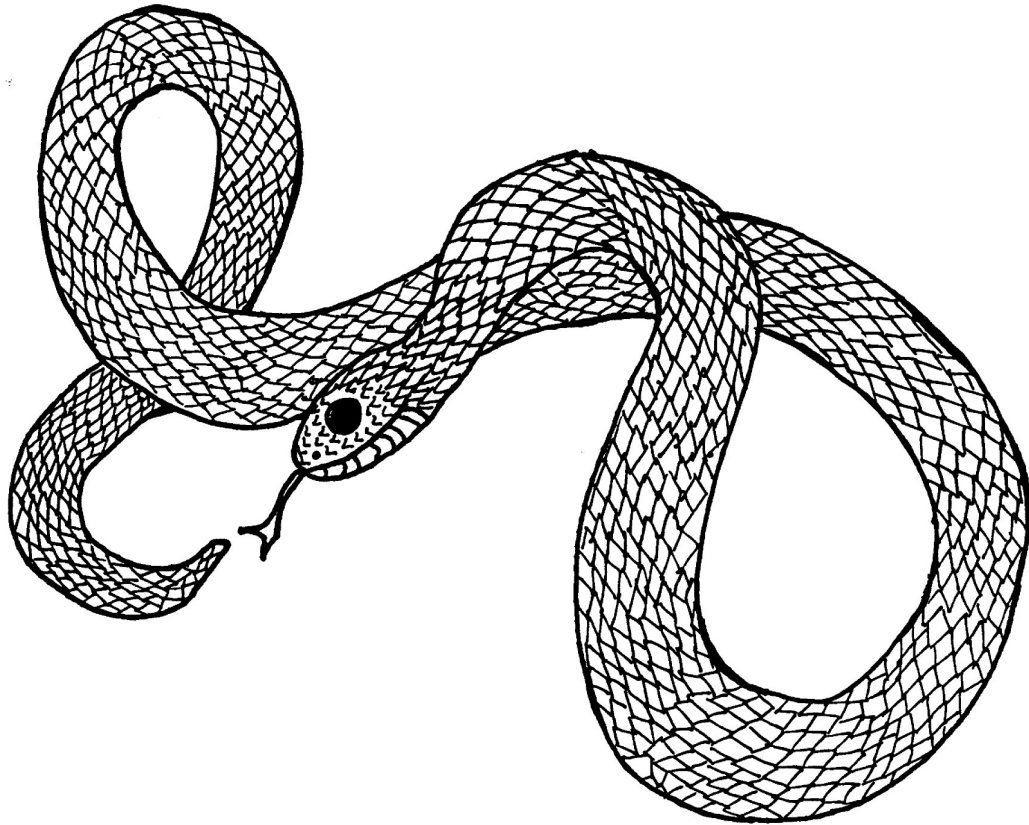


# Black Racer



**Coloring Instructions** – This snake's chin is white. Color the rest of the snake shiny black.

**Interesting Fact:** These non-venomous snakes are easy to identify because they slither with their heads up off the ground so you can see their white chins. They sometimes rattle the tip of their tail against dry leaves to imitate a rattlesnake and scare away predators. These snakes usually eat large bugs, frogs, lizards, other snakes, mice, and birds. They will bite repeatedly if handled.